

The clustering properties of intermediate mass young stars

Characterization cluster properties Herbig Ae/Be stars, by identifying the cluster environment around the target stars and determining the clusters' astrophysical parameters.

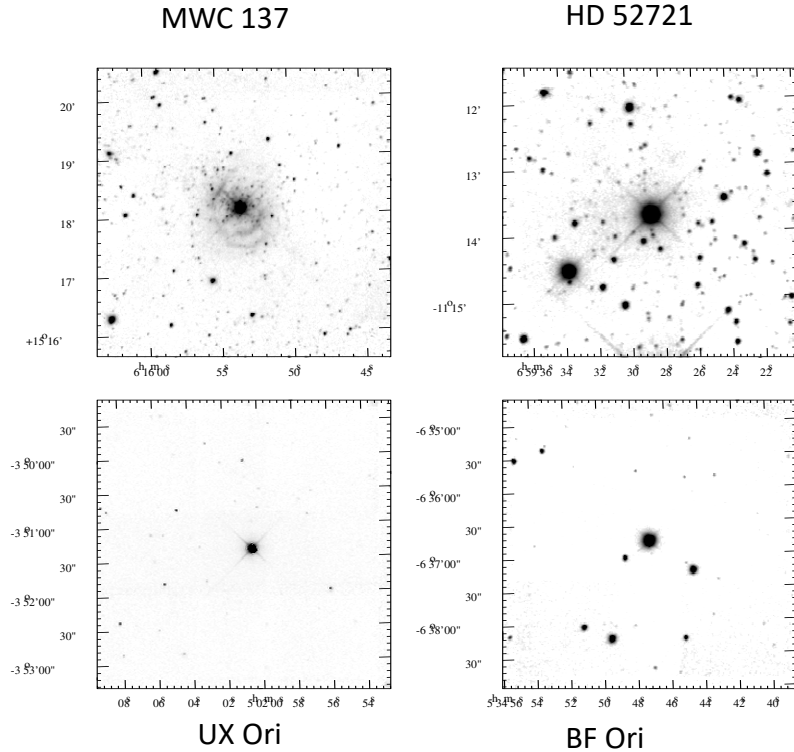
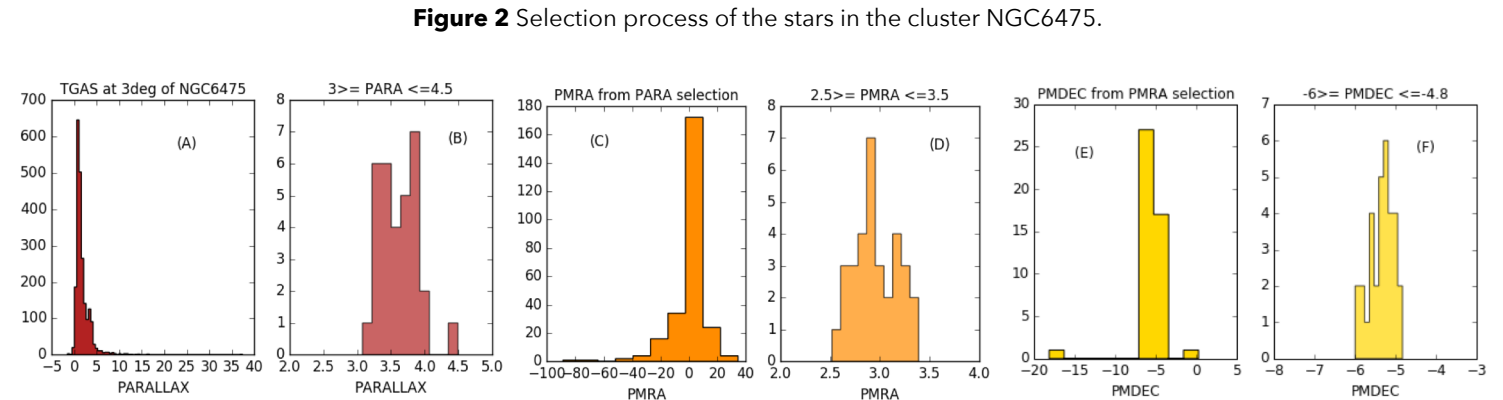


Figure 1 K band images of four Herbig stars. The upper section of the figure shows the Herbig stars surrounded by a large number of companions and the lower section of the figure the Herbig stars appear single and isolated. Figure taken from **Testi et al. (1997)**.



Source	Parallax mas	Pmra mas/yr	Pmdec mas/yr
Gaia Collaboration., et al. 2017	3.57	3.10	-5.32
This project	3.60	2.98	-5.35

Figure 3 Colour - Magnitude diagram of the cluster NGC6475. In figure A the black points represent the data from Tycho in a circular area with a radius of 3 degrees around the center and the red points are the cross-match between the result of the selection in parallax and proper motions from TGAS and Tycho.

